

P-100

● Old model P-115

■ GENERAL

Standard type purgometer. Widely accepted in the market. Suitable for both liquids and gases.

Applicable from built-in use for equipments up to purging monitoring of industrial processes. Available for PTFE sealing.

■ MAJOR APPLICATIONS

General purpose, built-in use for equipments (Small flow rate)

■ STANDARD SPECIFICATION

Measuring object		Liquids and gases	
Measuring range	Air	※1 Min. 4-20 NmL/min. Max. 5-50 NL/min.	- Air at 0°C, 1atm - When selecting flow range, refer to standard flow rate table. - In case Op. Press. at gas is not 1atm, refer to page 1.
	Water	Min. 5-50 mL/min. Max. 0.4-2 L/min. ※2	
Range ability	10:1		10:2 occasionally
Accuracy	± 5%F.S.		
Max. Op. Press.	8kgf/cm ² G(0.78MPaG)	When packing PTFE is used, Max. Op. Press. is 5kgf/cm ² G	
Max. Op. Temp.	120°C	Standard products have the packing materials made of NBR, so Max. Temp. is 80°C	
Material	Std.	Option(Specify by model code)	
Body	SUS304	SUS316,BS	
	Pyrex glass	Products by ZEONEX are also available. Consult factory separately.	
Packing	NBR(max.80°C)	Viton(max.120°C), CR(max.80°C), PTFE(max.120°C), EPDM(max.80°C)	
Support	Aluminium		
Cover	Poly-carbonate		
Connection	Std.	Rc1/4	Refer to Basic model code for details.
	Opt.	Rc1/8,NPT1/4,NPT1/8	
Mounting	Std.	Lock-nut mount onto panel front	Refer to ordering information for details.
	Opt.	Bezel installation, Panel-rear installation, Stand provided etc.	
Weight(std. type)	0.5kg		

※1 1-5NmL/min is available. Consult factory for details.
 ※2 0.5-5L/min is available. Consult factory for details.

■ ALARM AND ANALOG OUTPUT

Type	Availability	Reference pages
Reed switch type alarm unit	General	○ 45, 46 page
	CE, UL Version	○ 45, 46 page
PAU Optical alarm unit	○	47 page
Optical alarm unit	○	48 page
Analog output unit	○	49 - 52 page

■ STANDARD FLOW RATE TABLE (In case Op. Press. at gas is not 1atm, refer to page 1.)

In case alarm output code is O or E		In case alarm output code is A to D			
AIR(1atm,0°C)	Water	AIR(1atm,0°C)	Alarm setting range	Water	Alarm setting range
4-20 NmL/min	/	/	/	/	/
6-30 NmL/min	/	/	/	/	/
10-50 NmL/min	/	/	/	/	/
10-100 NmL/min	/	/	/	/	/
20-200 NmL/min	/	/	/	/	/
30-300 NmL/min	/	/	/	/	/
50-500 NmL/min	5-50 mL/min	50-500 NmL/min	100-400 NmL/min	5-50 mL/min	10-40 mL/min
0.1-1 NL/min	10-100 mL/min	0.1-1 NL/min	0.2-0.8 NL/min	10-100 mL/min	20-80 mL/min
0.2-2 NL/min	20-200 mL/min	0.2-2 NL/min	0.4-1.6 NL/min	20-200 mL/min	40-160 mL/min
0.3-3 NL/min	30-300 mL/min	0.3-3 NL/min	0.6-2.4 NL/min	30-300 mL/min	60-240 mL/min
0.5-5 NL/min	50-500 mL/min	0.5-5 NL/min	1-4 NL/min	50-500 mL/min	100-400 mL/min
1-10 NL/min	/	1-10 NL/min	2-8 NL/min	/	/
2-20 NL/min	0.1-1 L/min	3-15 NL/min	3-12 NL/min	/	/
3-30 NL/min	/	4-20 NL/min	4-16 NL/min	0.1-1 L/min	0.2-0.8 L/min
5-50 NL/min	0.3-1.5 L/min	6-30 NL/min	6-24 NL/min	/	/
	0.4-2 L/min	10-50 NL/min	10-40 NL/min		

※1 1-5NmL/min is available. Consult factory for details.
 ※2 0.5-5L/min is available. Consult factory for details.

*May be different depending on the scale length.
 *In case alarm output code is G, flow range differs. Consult factory for details.

■ ORDERING INFORMATION

Basic model code	Designation items for detailed specifications
P-10 □-□□-□□-□□	① Fluid name — ② Measuring range — ③ Press. — ④ Temp. — ⑤ Mounting option — ⑥ Other option
(Use Model Code Table for selection)	(For specification procedure, refer to page 53)



■ BASIC MODEL CODE

SERIES NAME	VALVE	ALARM ANALOG OUTPUT	WETTED PARTS MATERIAL	PACKING MATERIAL	CONNECTION TYPE	CONNECTION SIZE	EXAMPLE	DESCRIPTION
P-10	0	-	0	4	Z	2		
			VALVE					
			ALARM ANALOG OUTPUT					
			WETTED PARTS MATERIAL					
			PACKING MATERIAL					
			CONNECTION TYPE					
			CONNECTION SIZE					
						1	1/8	
						2	1/4(Standard)	
						Z	Special	
					R	Rc thread(Standard)		Lock-nut mounting onto panel front.
					N	NPT thread		If you want to use any other mounting, select from [Mounting opt].
					Z	Special		
					N	NBR(Standard)		
					C	CR		Select it for ammonia gas.
					F	VITON		
					E	EPDM		
					T	PTFE		Construction (gas) part material is only available for SUS316
					Z	Special		
				4		SUS304(Standard)		
				6		SUS316		
				B		BS		Available for receiving orders in lots.
				Z		Special		
				0		Not provided		
				A		Reed switch alarm (LO)		
				B		Reed switch alarm (LC)		Refer to page 45, 46.
				C		Reed switch alarm (HO)		
				D		Reed switch alarm (HC)		
				E		PAU ALARM UNIT provided		Refer to page 47.
				F		E3C Separate Type Optical alarm unit provided		Refer to page 48.
				G		PAS/PAU Purgometer, Analog output unit		Refer to page 49.
				Z		Special		
				0		Not provided		
				L		Bottom (gas for atmospheric pressure scale)		Refer to valve location selection guide (Page 57).
				U		Top (gas for pressure scale or for negative pressure on the secondary side)		
				Z		Special		
				0		Bottom rear → Top rear (Standard)		Select this code normally.
				1		Select this code normally.		Valve should be installed externally.
				9		Special		

■ OTHER AVAILABLE OPTIONS

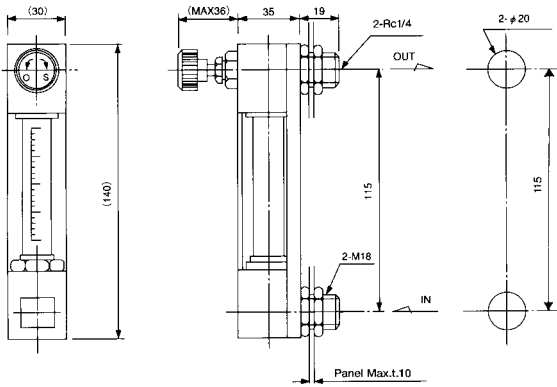
You can specify the following options:

Variable type on the front of alarm contact, reed switch lead wire length, double graduations, special graduations, built-in check valve type, built-in valve lock mechanism type, built-in rubber joint type, built-in joint type, etc.

(For details, refer to ⑥ Other Option and One-Point Advice on page 56)

■ DIMENSIONS

- STANDARD TYPE
P-100-U0-4N-R2
- Panel front lock-nut fixing
- Valve provided at Outlet



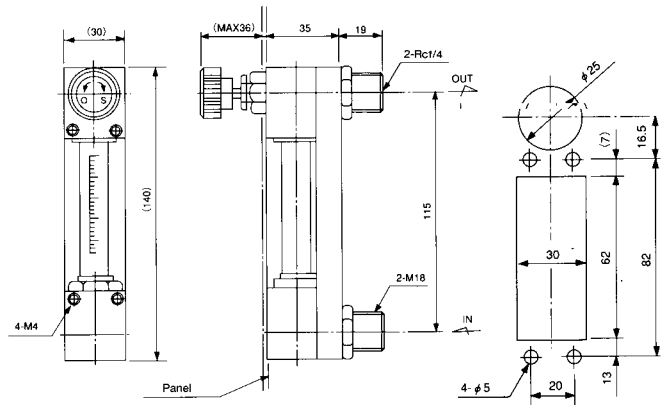
PANEL CUT

● PANEL-REAR INSTALLATION TYPE

P-100-U0-4N-R2 — N2 — 10NL/min — 0.01kgf/cm²G — C

Dimensions for P-100-U0-4N-R2.

- Panel-rear installation (Mounting Option code C77)
- Valve provided at Outlet
- The others are standard type



PANEL CUT

● Panel cut dimension

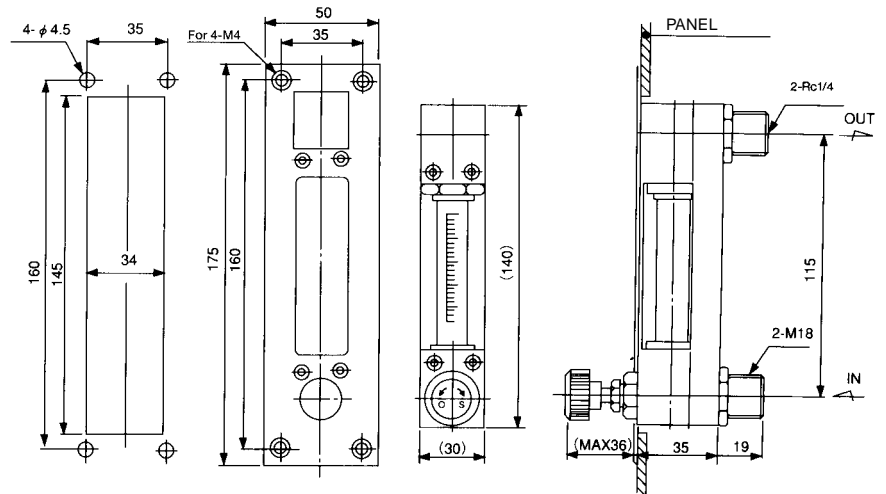
Connection Size	Hole diameter(mm)
Rc1/4, 1/4NPT	φ 20
Rc1/8, 1/8NPT	φ 16

Caution) Use non-magnetize material for panel when ALARM ANALOG OUTPUT code is A-D.

● BEZEL INSTALLATION TYPE

P-100-L0-4N-R2 — N2 — 10NL/min — D

- Bezel fixing (Installation option code D)
- Valve provided at Inlet
- The others are standard type



PANEL CUT

● Standard Material

Parts name	Standard material	Available material
Support	Aluminium	—
Body	SUS304	SUS316,C3604
Tapered tube	Pyrex glass	ZEONEX
Float	SUS316/Glass	PTFE,Ruby
Packing	NBR	VITON, CR, EPDM, PTFE
Fitting	SUS304	SUS316,C3604
Valve	SUS304	SUS316
Cover	Poly-carbonate	—

Parts whose names are described in **bold letters** are in contact with fluids to be measured.

● In case alarm output code is A to D

A	Reed switch alarm (LO)	Refer to page 45, 46.
B	Reed switch alarm (LC)	
C	Reed switch alarm (HO)	
D	Reed switch alarm (HC)	

● In case alarm output code is E to G

E	PAU ALARM UNIT provided	Refer to page 47.
F	E3C Separate Type Optical alarm unit provided	Refer to page 48.
G	PAS/IAU Purgemeter, Analog output unit provided	Refer to page 49.