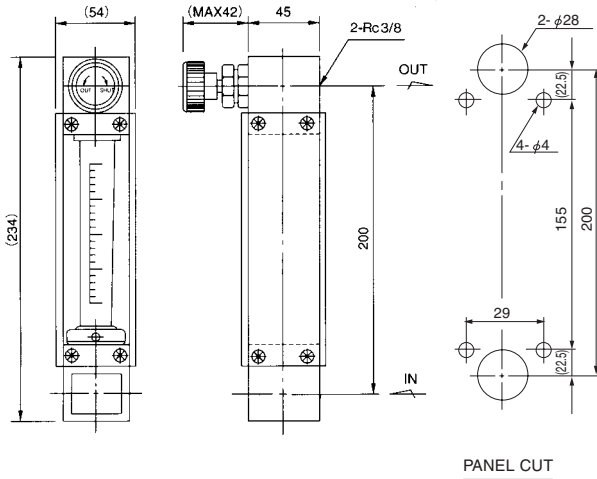




## DIMENSIONS

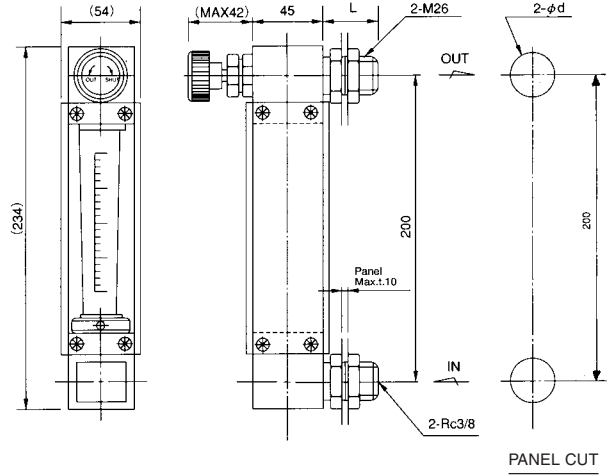
### STANDARD TYPE

(P-510-U0-4N-R3 Valve provided at Outlet, panel front thread (M3) mounting type)



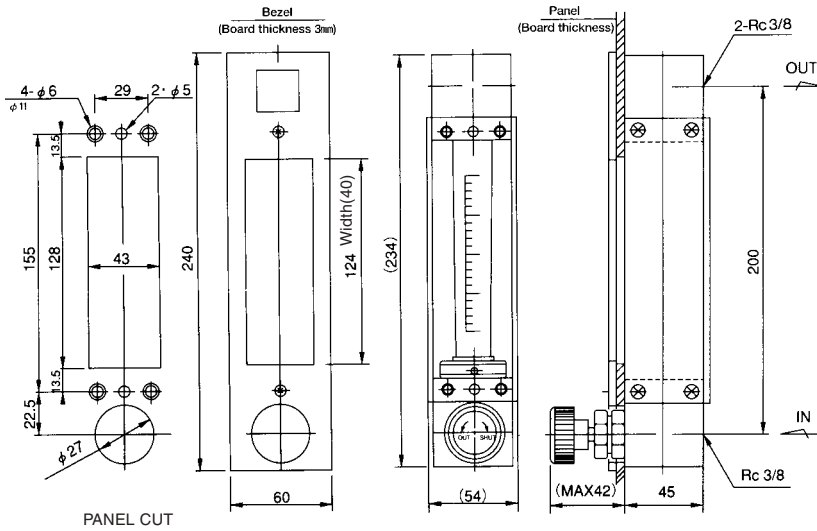
### PANEL-FRONT INSTALLATION TYPE

(P-510-U0-4N-L3, Valve provided at Outlet, panel front lock-nut fixing)



### BEZEL INSTALLATION TYPE

(P-510-L0-4N-R3, Valve provided at Outlet, Bezel installation.)  
(Mounting Option code **D**)



### PANEL CUT SIZE

For PANEL-FRONT INSTALLATION TYPE, Panel cut dimension may differ depending on connection size and rating. Refer to following table.

Connection size	Hole dia $\phi d$	Rear dia L
Rc 3/8	$\phi 28$	26
NPT 3/8	$\phi 28$	26
Rc 1/2	$\phi 32$	26
NPT 1/2	$\phi 32$	26
Rc 3/4	$\phi 38$	28
3/8 SW	$\phi 22$	(38)
3/8 VCR	$\phi 32$	(37.5)
1/2 VCR	$\phi 32$	(37.5)

Caution) Use non-magnetize material for panel when ALARM ANALOG OUTPUT code is A-D.

### Standard Material

Parts name	Standard material	Available material
<b>Body</b>	SUS304	Aluminium,SUS316
<b>Tapered tube</b>	Pyrex glass	—
<b>Float</b>	SUS304	—
<b>Packing</b>	NBR	VITON,CR,EPDM
<b>Spindle</b>	SUS304	SUS316
<b>Valve</b>	SUS304	SUS316
<b>Mounting board</b>	SPCC	SUS304
<b>Cover</b>	Acryl	—

Parts whose names are described in **bold letters** are in contact with fluids to be measured.

### In case alarm output code is A to D

A	Reed switch alarm(LO)	Refer to page 45, 46.
B	Reed switch alarm(LC)	
C	Reed switch alarm(HO)	
D	Reed switch alarm(HC)	

### In case alarm output code is E, G

E	PAU ALARM UNIT provided	Refer to page 47.
G	PAS/IAU Analog output unit	Refer to page 49.